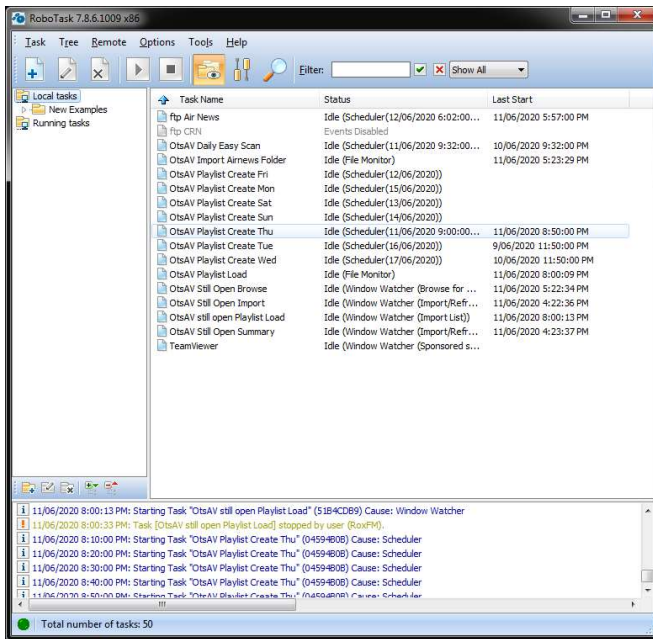


Robotask:

This file is for information only. **Do not** play with Robotask unless you know what you are doing or have someone with you who knows. Robotask runs the radio when nobody else is in the studio.

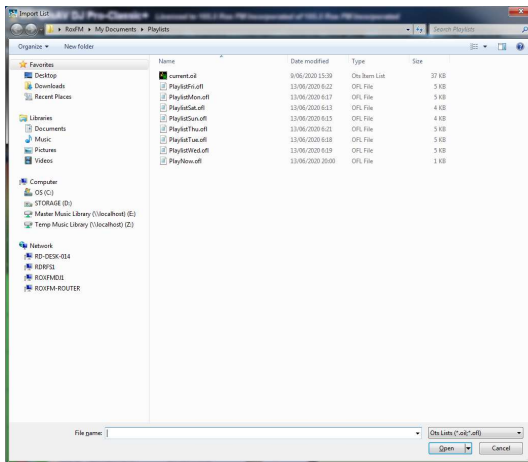
The program Robotask runs in the background and completes a range of tasks at pre set times, or after actions have occurred.



'OTSAV Playlist Create <day>' runs every 5 minutes from 00:00 (00,05,10,15,20,25,30,35,40,45,50,55)

It reads down the file playlist<day>.ofl and looks for a <time Sync> entry that matches the current time.

If an entry exists, the file PlayNow.ofl is updated to contain the playlist items set to play now.



OTSAV Playlist Load looks for changes to PlayNow.ofl. When a change happens it loads PlayNow.ofl at Playlist Beginning....

'ftp Air News' runs every 5 minutes from 06:02 to 17:57. (02,07,12,17,22,27,32,37,42,47,52,57) so as not to clash with the playlist create.

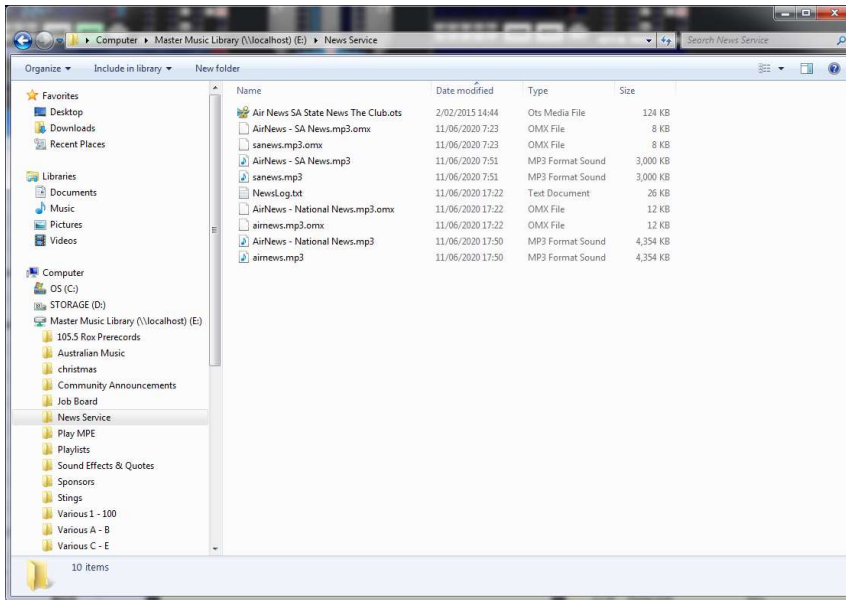
It compares files we have in 'Master Music Library\News Service' with files on the Airnews server.

If sanews.mp3 is updated, it is downloaded and a copy called AirNews – SA News.mp3 is created.

If airnews.mp3 is updated, it is downloaded and a copy called AirNews – National News.mp3 is created.


The NewsLog.txt file is updated each time the state or national news is downloaded.

The .mp3 files and .txt files can be deleted, they will be downloaded on the next run of 'ftp Air News'



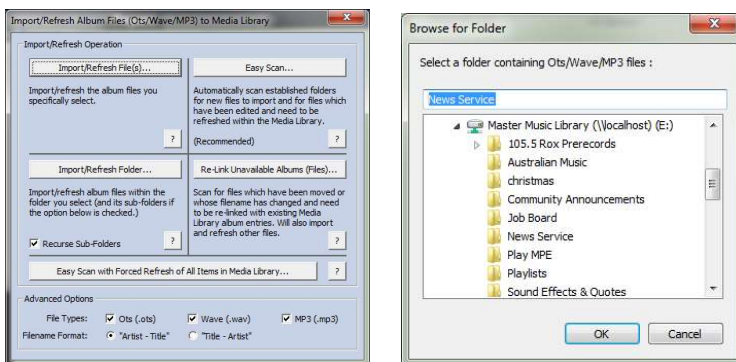
'OTSAV Import Air News Folder' is triggered when any files in 'Master Music Library\News Service' are changed.

The run is delayed by 10 seconds to allow multiple file changes to be completed and only run the 'OTSAV Import Air News folder' once.

'OTSAV Import Air News Folder' presses the import refresh files button ,

then Import/Refresh Folder... button, then browses to News Service and clicks ok.

News files are then refreshed ready to air.



OTSAV Still Open (Browse, Import, Playlist Load, Summary) are catch all programs to try and recover from errors or if a DJ user leaves a dialog box open. If a dialog box is open for more than 20 seconds it is closed so that the other automatic actions can be completed.

OTSAV Daily Easy Scan runs each night at 09:32 to trigger an easy scan of the OTSAV music database and capture any new files.