

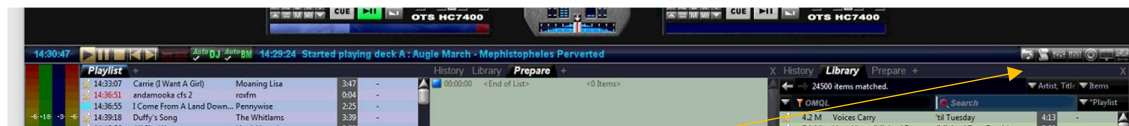
RoxFM

Scheduler:

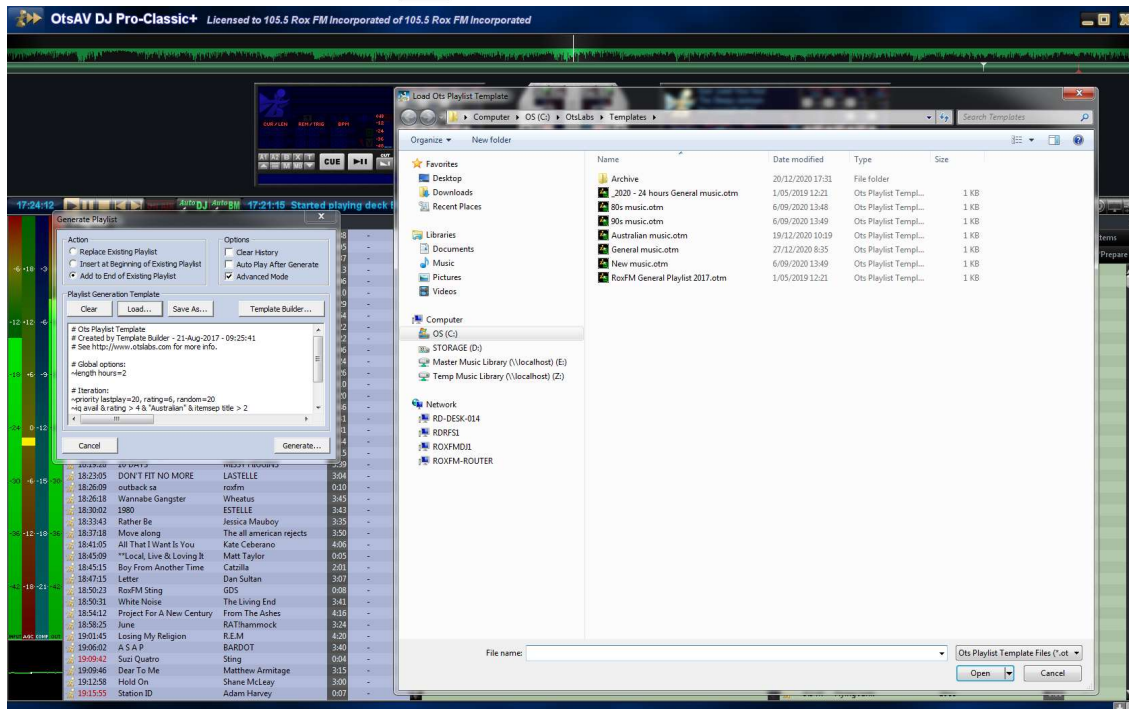
Daily music list – as nobody was loading music Jamie has automated the loading of the daily music playlists. This is currently happening at midnight. Approximately 39 hours of music is loaded each evening as follows:

00:00 – 02:59	*-00:01 Template replace 3 New music.otm
03:00 – 05:59	*-00:02 Template end 3 General Aus Xmas music.otm
06:00 – 08:59	*-00:03 Template end 3 80s music.otm
09:00 – 14:59	*-00:04 Template end 6 General music.otm
15:00 – 17:59	*-00:05 Template end 3 90s music.otm
18:00 onwards	*-00:06 Template end 18 General Aus Xmas music.otm
	*-00:09 SaveOML

Generate playlist:

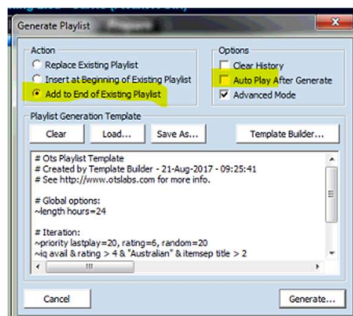


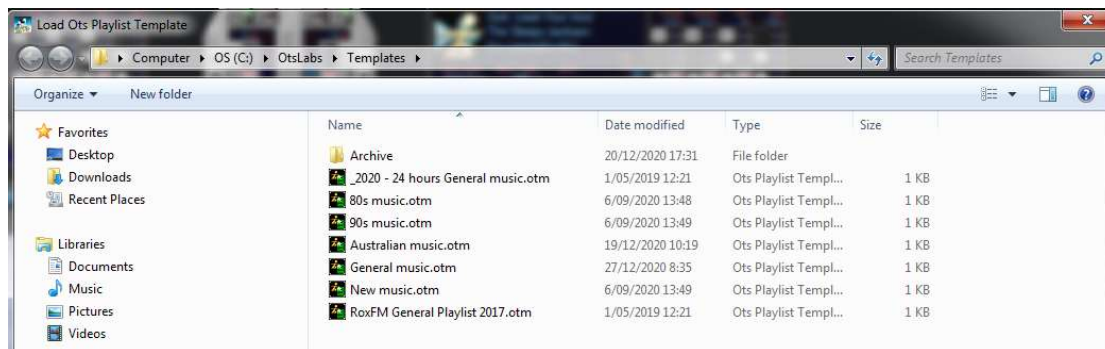
Click the Generate playlist icon



Ensure Action is set to Add to End of Existing Playlist.

Select Load...





There is a collection of playlists created, the title shows the music type.

General music.otm – 3 hours – 6/9 Aus

Australian / Station ID / 1980s / Pop / 5x Australian

Ots Playlist Template

Created by Template Builder - 21-Aug-2017 - 09:25:41

See <http://www.otslabs.com> for more info.

Global options:

~length hours=3

Iteration:

~priority lastplay=20, rating=6, random=20

~iq avail & rating > 4 & "Australian" & itemsep title > 2

~iq avail & rating > 0 & "Current Station IDs/Promos" & itemsep title > 3

~iq avail & rating > 0 & "1980s" & itemsep title > 4

~iq avail & rating > 0 & "Pop" & itemsep title > 5

~priority lastplay=30, rating=50, random=60

~iq=3 avail & rating >= 5 & ("Australian" | "AMRAP" | "Indigenous" | "modern") & !("Metal" | "Explicit" | "Dance" | "Dance House" | "1950s" | "christmas") & lastplay > 24 hours & itemsep artist > 50 & itemsep title > 30

OTS DJ Pro-Classic+ Licensed to 105.5 Rox FM Incorporated of 105.5 Rox FM Incorporated

File Edit View Control Options Video Help

Exit OTS

Cut Ctrl+X
Copy Ctrl+C
Paste Ctrl+V
Delete Ctrl+Del
Search Music Library Shift+Right
Find in List... Ctrl+F
Manage Categories...
Generate Playlist...
Scheduling & Logging...

16:44:37 Started playing deck B : Robert Ellis - Four Song

Playlist	Artist	Track	Time
16:45:31	All Out	Sarah Blaes Live at 52nd...	4:27
16:45:54	Clarity	Zeus Feeding Furies	4:36
16:49:30	When They Come For Me	Linkin Park	4:51
17:04:19	andromeda cl 2	ronfm	0:04
17:04:23	Placeholder		
17:04:23	Placeholder		
17:04:23	You Don't Know What Lov...	Mile - The Mechanics	5:08
17:09:26	105.5 Rox FM Kick	Rox FM	0:03

OTS HC7400

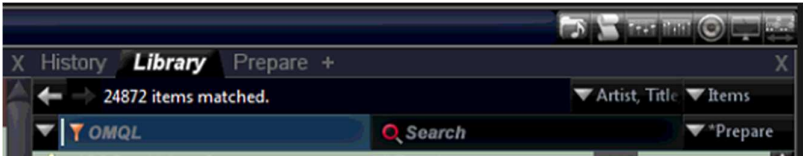
Prepare

10:00:00 End of List



1950s	1960s	1970s	1980s	1990s
2000s	2010s	2020s		
Australian	Explicit	Christmas	Aboriginal	Station IDs
ANZAC				
Pop	Rock	Alternative	Folk	Country
Easy Listening	Blues	Instrumental	Gospel	RandB
A capella				

How to use categories to find music



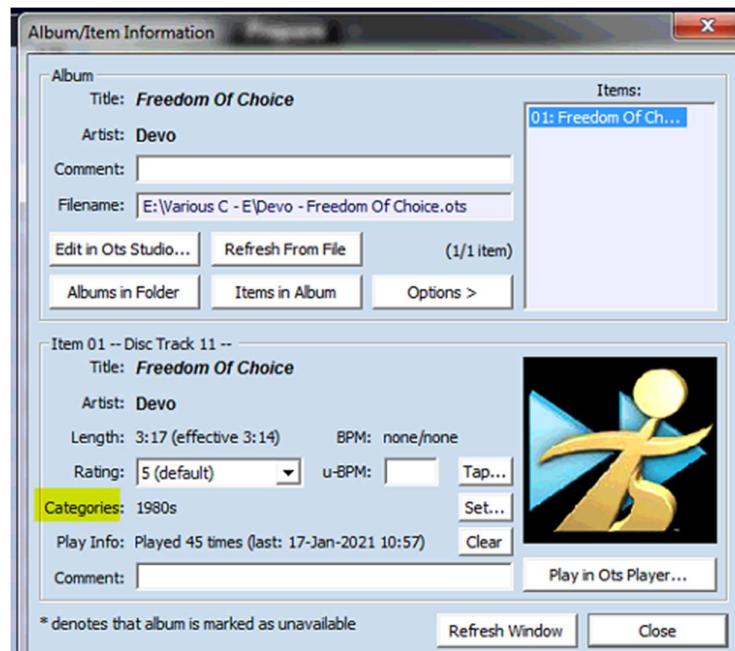
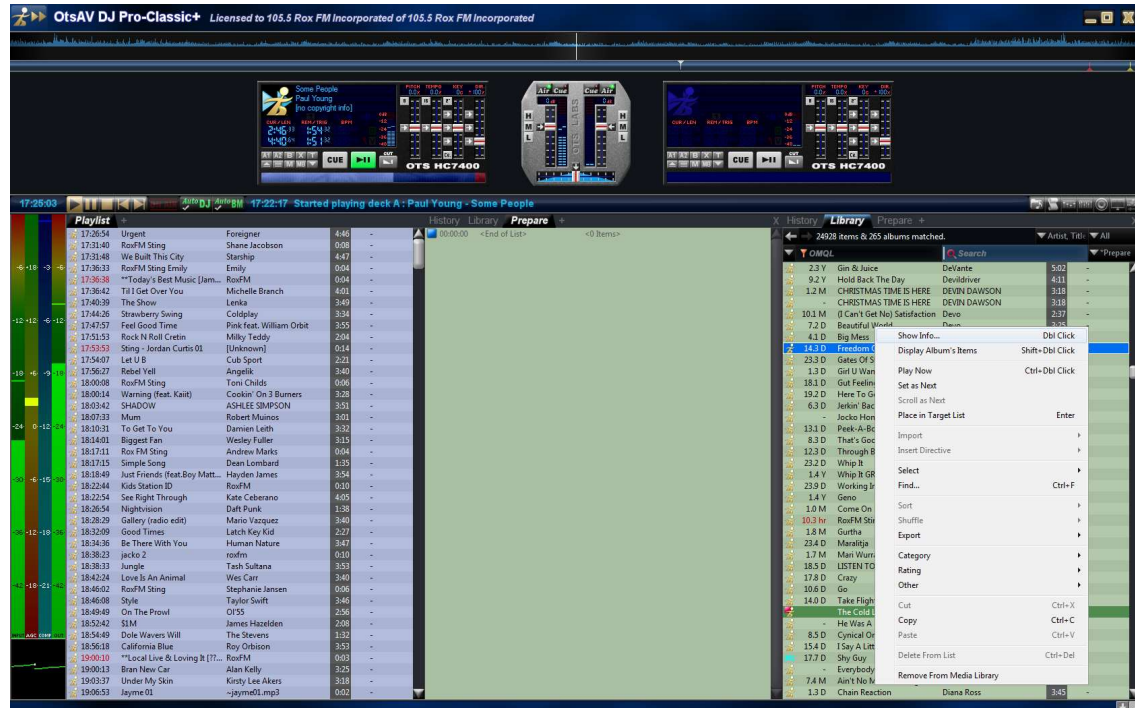
Click on the drop down arrow next to OMQL  this will give you the list of categories,



Select from the list and the library will only show the selected category.

To return to the full library, click with your right mouse button on the arrow.

How to see category of songs



Loading of new music:

Importance of setting categories

Categories available

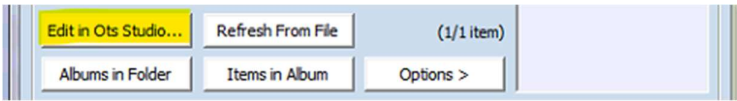
Once loaded categorise from genre in OTs DJ

Correcting categories

To update –

Find out how the song has been classified – check the internet or the CD, look for release dates and genre information. Review the categories available before editing a song.

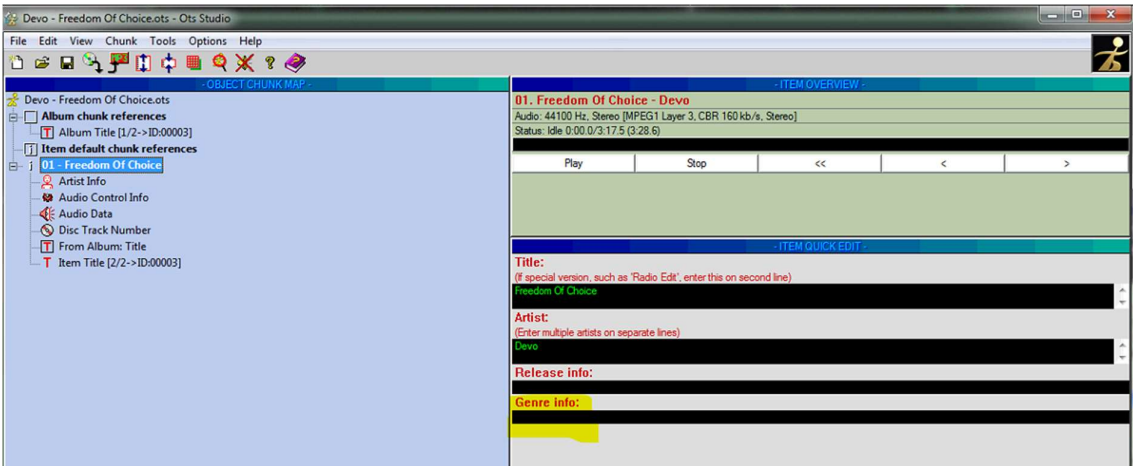
Right click on song, show info... Edit in Ots Studio...



Update the Genre Info: by typing in the black box.

It is important to check your spelling of the category and to use a comma (,) if adding to multiple categories.

E.G. 1980s, Pop



Save 

Close 